

**ITEM 29. PARKING – HICKSON ROAD MILLERS POINT**

**TRIM RECORD NO: 2016/285707**

**RECOMMENDATION**

It is recommended that the Committee endorse the following reallocation of parking:

- (A) On the western side of Hickson Road between the points 61.1 metres and 67.1 metres (one car space), south of Towns Place as “Motor Bikes Only”; and
- (B) On the eastern side of Hickson Road between the points 36.2 metres and 54.2 metres (three car spaces), south of Towns Place as “Loading Zone 6am-6pm Mon-Fri, 6am-2pm Sat-Sun; 4P Ticket 6pm-10pm Mon-Fri, 2pm-10pm Sat-Sun, 8am-10pm Public Holidays”.

**VOTING MEMBERS FOR THIS ITEM**

<b><i>Voting Members</i></b>	<b><i>Support</i></b>	<b><i>Object</i></b>
City of Sydney		
Roads and Maritime Services		
NSW Police – Sydney City LAC		
Representative for the Member for Sydney		

**DECISION**

**BACKGROUND**

Drivers have requested consideration of motor bike parking and “4P Ticket” parking in Hickson Road to improve driveway sight lines and increase parking turnover.

**COMMENTS**

The current kerbside parking restrictions in Hickson Road, south of Towns Place, are a mixture of “Loading Zones” and “2P/4P Tickets”.

An assessment of the site revealed that this location is suitable for the provision of dedicated motorbike parking as it will improve driveway sight lines and there is demand from motorcyclists for parking in this area.

The proposed “Loading Zone 6am-6pm Mon-Fri, 6am-2pm Sat-Sun; 4P Ticket 6pm-10pm Mon-Fri, 2pm-10pm Sat-Sun, 8am-10pm Public Holidays” will improve parking turnover in Hickson Road and are consistent with the parking controls in nearby streets.

**CONSULTATION**

The City consulted local residents and businesses in the area. There were 75 letters sent out with no responses supporting or opposing the proposal.

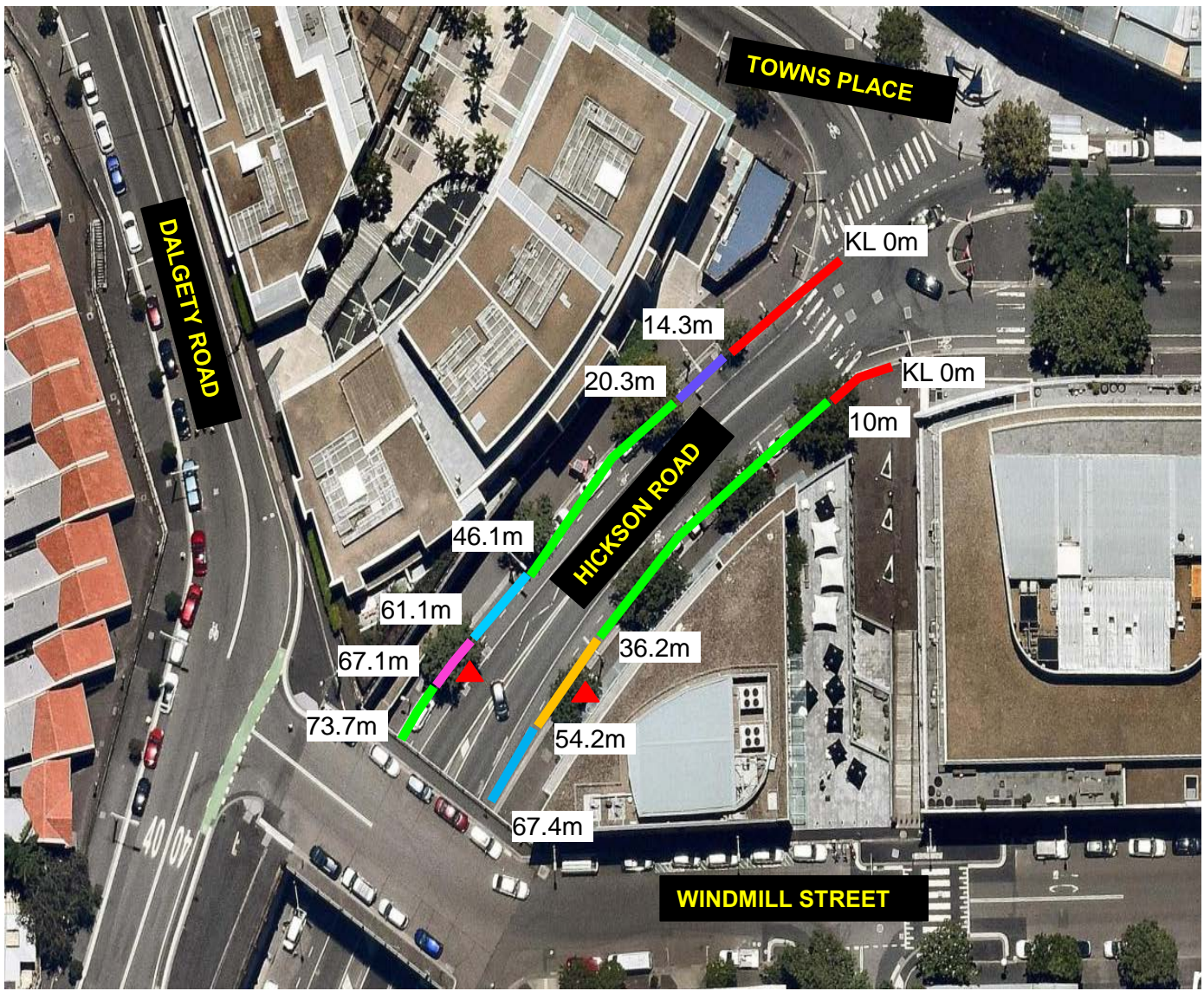
**FINANCIAL**

Funds are available in the current budget.


**ATTACHMENTS**


Parking – Hickson Road Millers Point


Clement Lim, Senior Traffic Engineer





Source: nearmap.com 30/06/2016


- 

**EXISTING: NO STOPPING**  
**NO CHANGES PROPOSED**
  
- 

**EXISTING: 2P TICKET 8AM-6PM MON-FRI; 4P TICKET 6PM-10PM MON-FRI, 8AM-10PM SAT SUN AND PUBLIC HOLIDAYS**  
**NO CHANGES PROPOSED**
  
- 

**EXISTING: NO PARKING AUTHORISED CAR SHARE VEHICLES EXCEPTED ZONE GG**  
**NO CHANGES PROPOSED**
  
- 

**EXISTING: NO PARKING (DRIVEWAY ACCESS)**  
**NO CHANGES PROPOSED**
  
- 

**EXISTING: 2P TICKET 8AM-6PM MON-FRI; 4P TICKET 6PM-10PM MON-FRI, 8AM-10PM SAT SUN AND PUBLIC HOLIDAYS**  
**PROPOSED: MOTORBIKES ONLY (ONE SPACE)**
  
- 

**EXISTING: LOADING ZONE 7AM-6PM MON-FRI; 7AM-2PM SAT-SUN**  
**PROPOSED: LOADING ZONE 6AM-6PM MON-FRI; 6AM-2PM SAT-SUN; 4P TICKET 6PM-10PM MON-FRI, 2PM-10PM SAT-SUN, 8AM-10PM PUBLIC HOLIDAYS (THREE SPACES)**

## Proposed Parking Changes

HICKSON ROAD, MILLERS POINT  
 SOUTH OF TOWNS PLACE

